

## IES Report

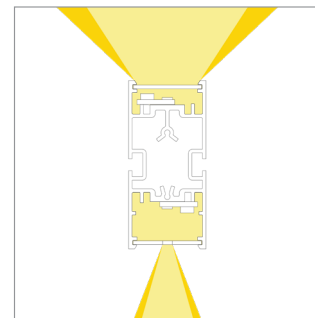
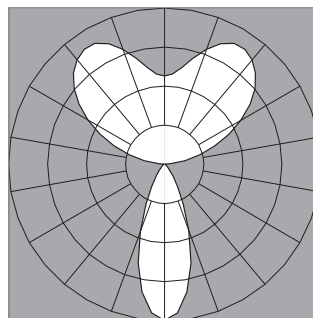
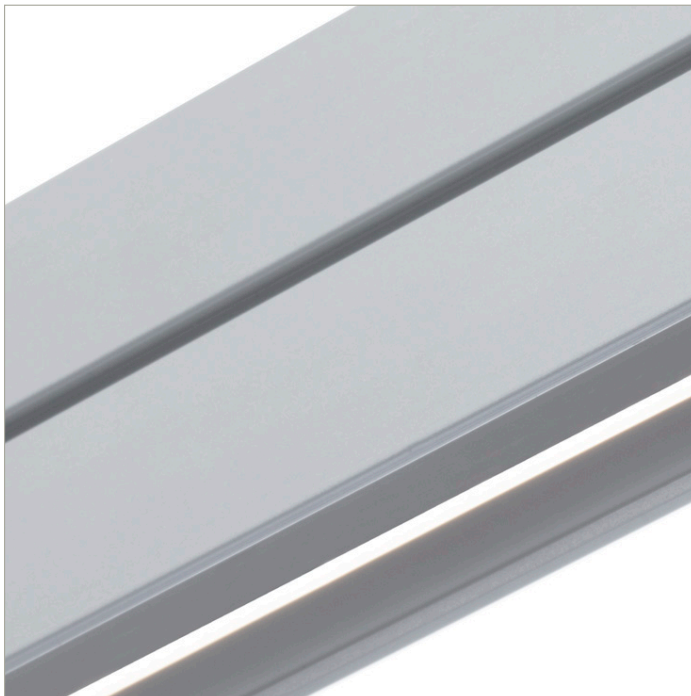
DoubleBox™ | 107 | 120° Batwing, up | 40° Symmetric, down | 80 CRI | LO

107-DB-XX-4-48-XX-XX-XX-XX-X-X-Z-LO-35-G1S1-X-AL / WH-X

	2700K	3000K	3500K	4000K
Efficacy - Lumens per Watt	71	73	75	76
Total Lumens, 4' rail length (1219mm)	2113	2179	2224	2268
Lumens per foot (305mm)	528	545	556	567
Lumens per foot UP (305mm)	369	380	388	396
Lumens per foot DOWN (305mm)	160	165	168	171
Input Power (W), 4' rail length (1219mm)	29.9	29.9	29.9	29.9
Watts per foot (305mm)	7.5	7.5	7.5	7.5
CRI	85	85	85	85

Due to the large number of options in Vode's product offering, most Vode IES reports are factored reports prepared from source reports. Source reports are the IES test reports prepared for Vode by an NVLAP accredited photometric test laboratory. Factored reports are based on data from the Vode source reports.

If the data above is in black, it is directly from a Vode source report. If it is in grey, it is factored from Vode source reports. Reference details on Vode source reports can be found on the [IES File Finder](#) page on [vode.com](#).



## IES Report

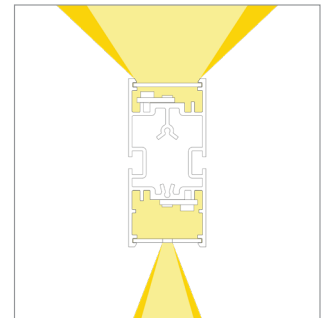
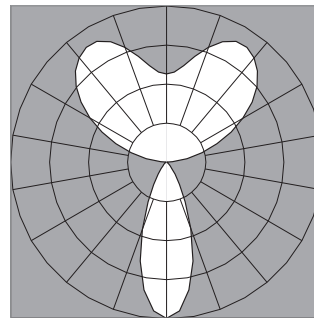
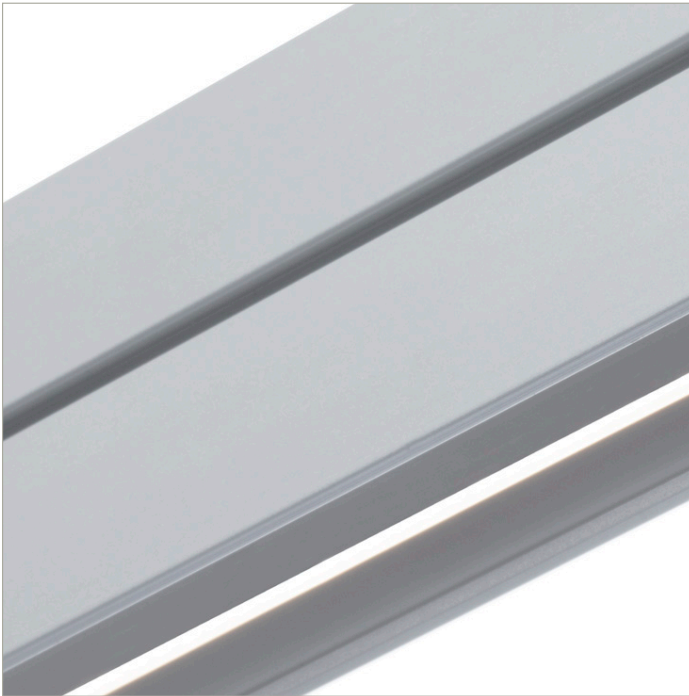
**DoubleBox™ | 107 | 120° Batwing, up | 40° Symmetric, down | 80 CRI | SO**

**107-DB-XX-4-48-XX-XX-XX-XX-X-X-Z-SO-35-G1S1-X-AL / WH-X**

	2700K	3000K	3500K	4000K
Efficacy - Lumens per Watt	88	91	93	95
Total Lumens, 4' rail length (1219mm)	4225	4358	4447	4536
Lumens per foot (305mm)	1056	1090	1112	1134
Lumens per foot UP (305mm)	737	761	776	792
Lumens per foot DOWN (305mm)	319	329	336	343
Input Power (W), 4' rail length (1219mm)	48.1	48.1	48.1	48.1
Watts per foot (305mm)	12.1	12.1	12.1	12.1
CRI	85	85	85	85

Due to the large number of options in Vode's product offering, most Vode IES reports are factored reports prepared from source reports. Source reports are the IES test reports prepared for Vode by an NVLAP accredited photometric test laboratory. Factored reports are based on data from the Vode source reports.

If the data above is in black, it is directly from a Vode source report. If it is in grey, it is factored from Vode source reports. Reference details on Vode source reports can be found on the [IES File Finder](#) page on [vode.com](#).



## IES Report

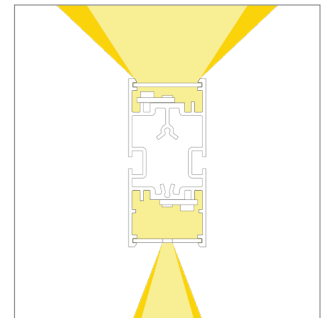
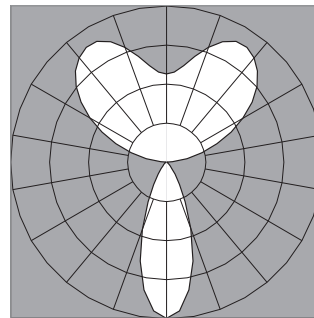
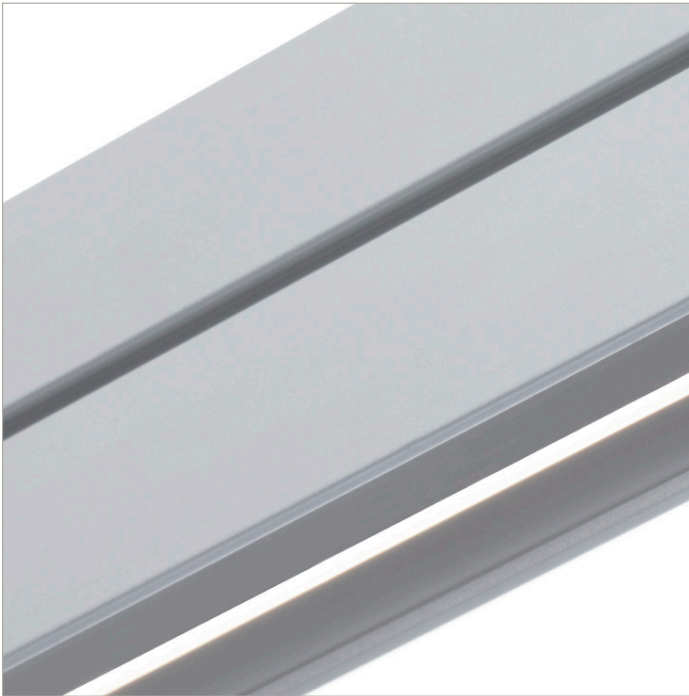
DoubleBox™ | 107 | 120° Batwing, up | 40° Symmetric, down | 80 CRI | HO

107-DB-XX-4-48-XX-XX-XX-XX-X-X-Z-HO-35-G1S1-X-AL / WH-X

	2700K	3000K	3500K	4000K
Efficacy - Lumens per Watt	82	85	86	88
Total Lumens, 4' rail length (1219mm)	8028	8281	8450	8619
Lumens per foot (305mm)	2007	2070	2113	2155
Lumens per foot UP (305mm)	1401	1445	1475	1504
Lumens per foot DOWN (305mm)	606	625	638	651
Input Power (W), 4' rail length (1219mm)	98.4	98.4	98.4	98.4
Watts per foot (305mm)	24.7	24.7	24.7	24.7
CRI	85	85	85	85

Due to the large number of options in Vode's product offering, most Vode IES reports are factored reports prepared from source reports. Source reports are the IES test reports prepared for Vode by an NVLAP accredited photometric test laboratory. Factored reports are based on data from the Vode source reports.

If the data above is in black, it is directly from a Vode source report. If it is in grey, it is factored from Vode source reports. Reference details on Vode source reports can be found on the [IES File Finder](#) page on [vode.com](#).



## IES Report

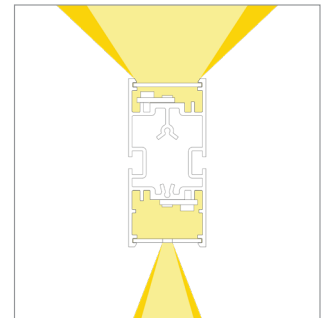
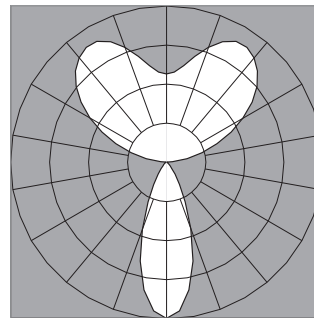
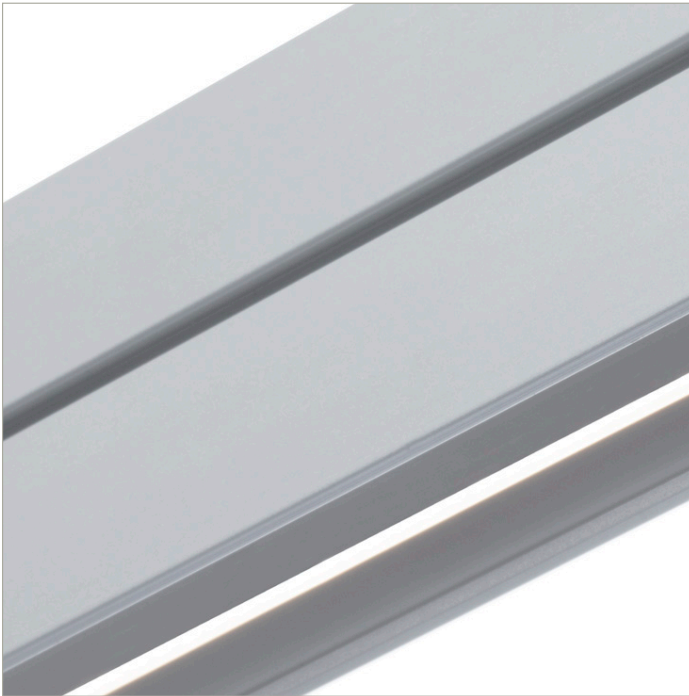
DoubleBox™ | 107 | 120° Batwing, up | 40° Symmetric, down | 90 CRI | LO

107-DB-XX-4-48-XX-XX-XX-XX-X-X-Z-LO-359-G1S1-X-AL / WH-X

	2700K	3000K	3500K	4000K
Efficacy - Lumens per Watt	61	63	65	66
Total Lumens, 4' rail length (1219mm)	1821	1879	1917	1955
Lumens per foot (305mm)	455	470	479	489
Lumens per foot UP (305mm)	318	328	335	341
Lumens per foot DOWN (305mm)	138	142	145	148
Input Power (W), 4' rail length (1219mm)	29.9	29.9	29.9	29.9
Watts per foot (305mm)	7.5	7.5	7.5	7.5
CRI	96	96	96	96

Due to the large number of options in Vode's product offering, most Vode IES reports are factored reports prepared from source reports. Source reports are the IES test reports prepared for Vode by an NVLAP accredited photometric test laboratory. Factored reports are based on data from the Vode source reports.

If the data above is in black, it is directly from a Vode source report. If it is in grey, it is factored from Vode source reports. Reference details on Vode source reports can be found on the [IES File Finder](#) page on [vode.com](#).



## IES Report

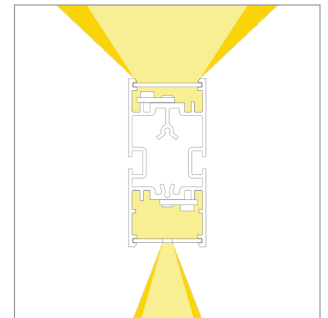
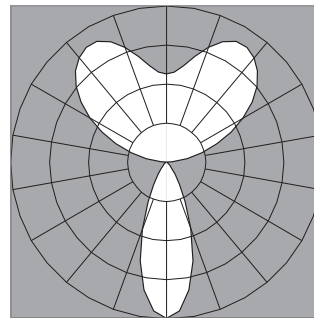
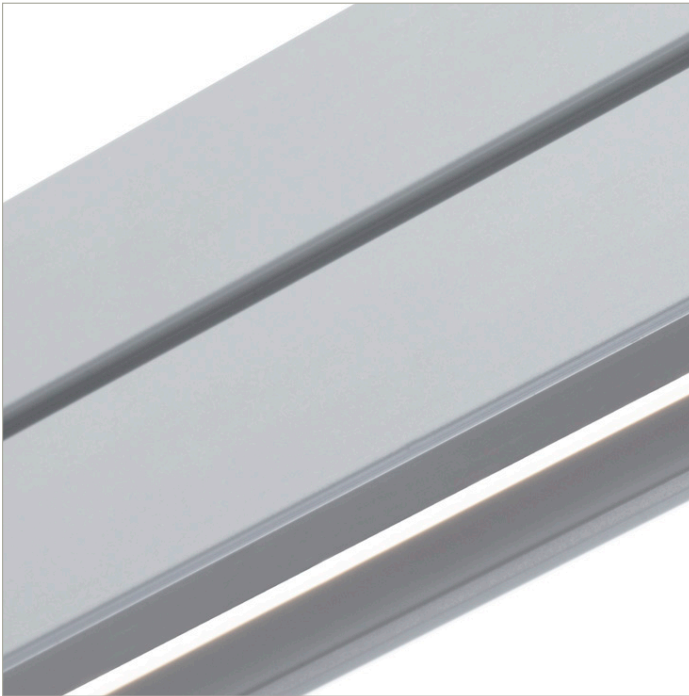
**DoubleBox™ | 107 | 120° Batwing, up | 40° Symmetric, down | 90 CRI | SO**

**107-DB-XX-4-48-XX-XX-XX-XX-X-X-Z-SO-359-G1S1-X-AL / WH-X**

	2700K	3000K	3500K	4000K
Efficacy - Lumens per Watt	76	78	80	82
Total Lumens, 4' rail length (1219mm)	3642	3757	3834	3911
Lumens per foot (305mm)	911	939	958	978
Lumens per foot UP (305mm)	636	656	669	682
Lumens per foot DOWN (305mm)	275	284	290	295
Input Power (W), 4' rail length (1219mm)	48.19	48.19	48.19	48.19
Watts per foot (305mm)	12.1	12.1	12.1	12.1
CRI	96	96	96	96

Due to the large number of options in Vode's product offering, most Vode IES reports are factored reports prepared from source reports. Source reports are the IES test reports prepared for Vode by an NVLAP accredited photometric test laboratory. Factored reports are based on data from the Vode source reports.

If the data above is in black, it is directly from a Vode source report. If it is in grey, it is factored from Vode source reports. Reference details on Vode source reports can be found on the [IES File Finder](#) page on [vode.com](#).



## IES Report

DoubleBox™ | 107 | 120° Batwing, up | 40° Symmetric, down | 90 CRI | HO

107-DB-XX-4-48-XX-XX-XX-XX-X-X-Z-HO-359-G1S1-X-AL / WH-X

	2700K	3000K	3500K	4000K
Efficacy - Lumens per Watt	71	73	74	76
Total Lumens, 4' rail length (1219mm)	6920	7139	7285	7430
Lumens per foot (305mm)	1730	1785	1821	1858
Lumens per foot UP (305mm)	1208	1246	1271	1297
Lumens per foot DOWN (305mm)	523	539	550	561
Input Power (W), 4' rail length (1219mm)	98.44	98.44	98.44	98.44
Watts per foot (305mm)	24.7	24.7	24.7	24.7
CRI	96	96	96	96

Due to the large number of options in Vode's product offering, most Vode IES reports are factored reports prepared from source reports. Source reports are the IES test reports prepared for Vode by an NVLAP accredited photometric test laboratory. Factored reports are based on data from the Vode source reports.

If the data above is in black, it is directly from a Vode source report. If it is in grey, it is factored from Vode source reports. Reference details on Vode source reports can be found on the [IES File Finder](#) page on [vode.com](#).